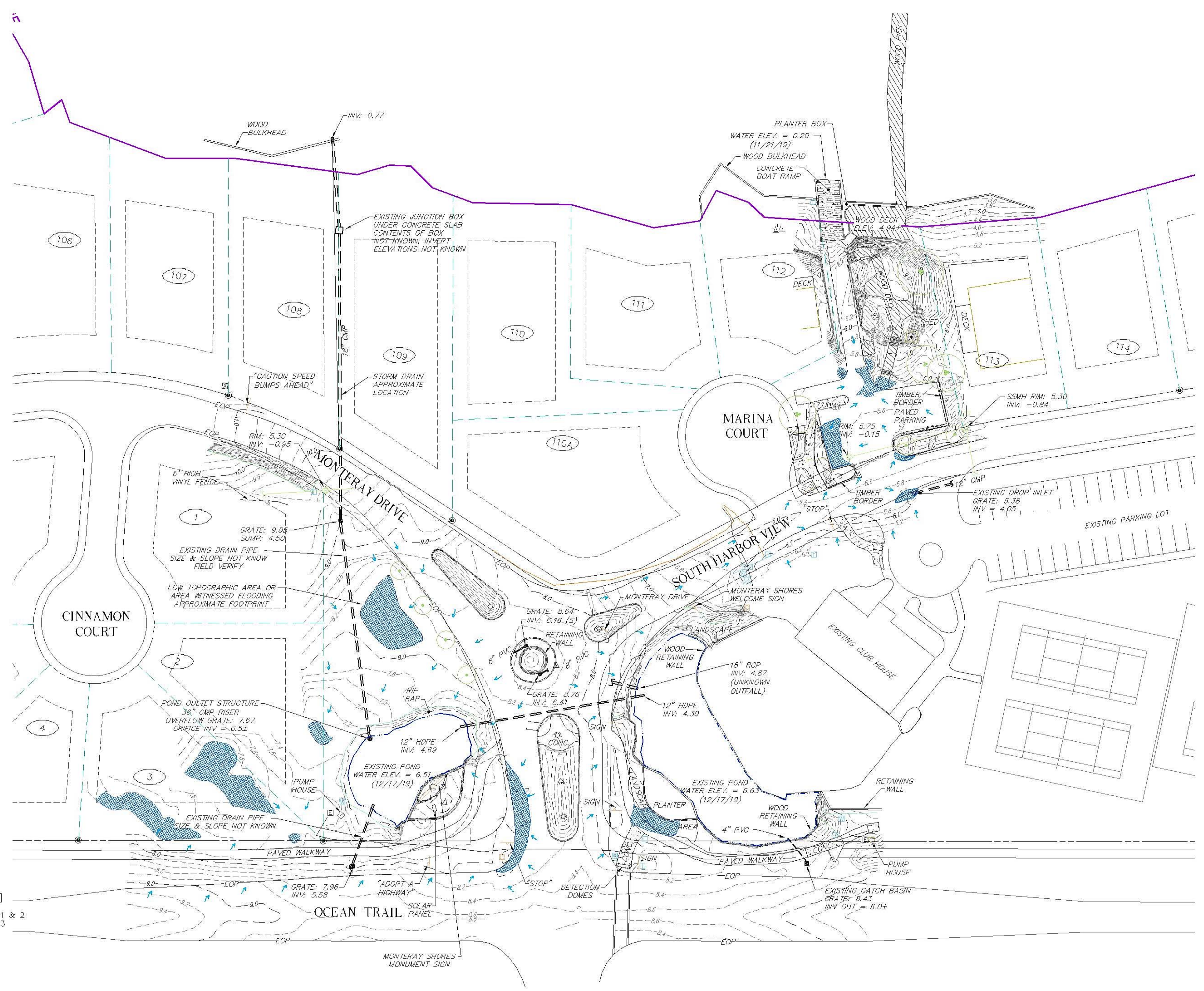
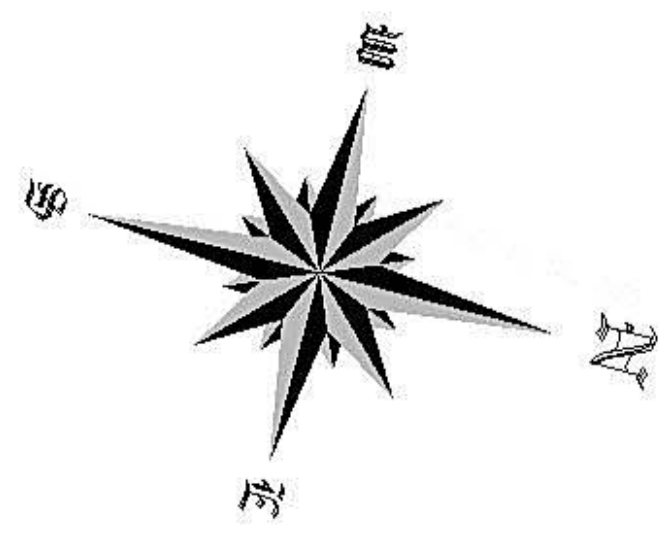


LEGEND

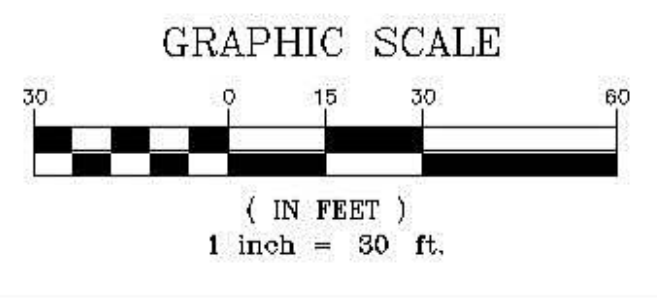
EX. WATER LINE	— W —
BLUE PAINT LINE	— SS —
EX. SANITARY SEWER LINE	— IM —
FORCE MAIN SEWER	— FM —
GREEN PAINT LINE	— E —
EX. ELECTRIC LINE	— T —
RED PAINT LINE	— C —
EX. COMMUNICATIONS LINE	— S —
ORANGE PAINT LINE	— D —
EX. STORM DRAIN LINE	— S —
EX. TOPOGRAPHIC CONTOUR	— 4 —
FIBER OPTIC MARKER POST	FOP
PR. SPOT GRADE ELEVATION	—
FIRE HYDRANT	—
CABLE TV PEDESTAL	—
PHONE PEDESTAL	—
GUY WIRE	—
POWER POLE	—
WATER VALVE	—
EX. SIGN	—
PR. SIGN	—
EX. LIGHT POLE	—
CONTROL POINT	—
EXISTING CONCRETE MONUMENT	—
EXISTING IRON ROD	—
EXISTING IRON PIPE	—
SET IRON ROD	—
EXISTING MAG. HAIL	—
CALCULATED POINT	—
EDGE OF PAVEMENT	—
RIGHT OF WAY	—
PAVEMENT RADIUS (FT.)	—
TOTAL DISTANCE	—
RADIAL DISTANCE	—
SHEET FLOW ARROW	—



**PRELIMINARY
NOT FOR CONSTRUCTION
FOR BID & PERMITTING**

INDEX

SHEET C100	COVER SHEET
SHEET EC200	EXISTING CONDITIONS - AREA 1 & 2
SHEET EC201	EXISTING CONDITIONS - AREA 3
SHEET C300	SITE DRAINAGE IMPROVEMENTS AREA 1 & 2
SHEET C301	SITE DRAINAGE IMPROVEMENTS AREA 3
SHEET C302	DETAILS SHEET



P.O. Box 1129
4425 N. GROTAN HWY
KITTICHOQUA, NC 27549
(252) 261-1353
C-0836

Coastal
ENGINEERING & SURVEYING, INC.
Civil - Structural
Site Development

Copyright © 2020
Coastal Engineering & Surveying, Inc.
THIS DOCUMENT IS THE PROPERTY OF
COASTAL ENGINEERING & SURVEYING, INC.
NO REPRODUCTION OR TRANSMISSION
OF ANY PART OF THIS DOCUMENT IS
PERMITTED WITHOUT THE WRITTEN
CONSENT OF COASTAL ENGINEERING &
SURVEYING, INC.

**NORTH CAROLINA
PROFESSIONAL
SEAL
14071
ENGINEER
CARLOS F. GOMEZ**

NO.	DATE	REVISIONS
		DESCRIPTION

MONTEREY SHORES PHASED DRAINAGE PROJECT
FOR: MONTEREY SHORES HOA
POPLAR BRANCH TOWNSHIP CURRITUCK COUNTY NORTH CAROLINA
EXISTING CONDITIONS AREAS 1 & 2

DATE:	2/01/19	SCALE:	1"=30'
CHECKED:	CFG	DRAWN:	MMH
PROJECT NO.:	P716		
CAD FILE:	P716 SP3		
SHEET:	EC200		